

The Base Line Study

Conducted between

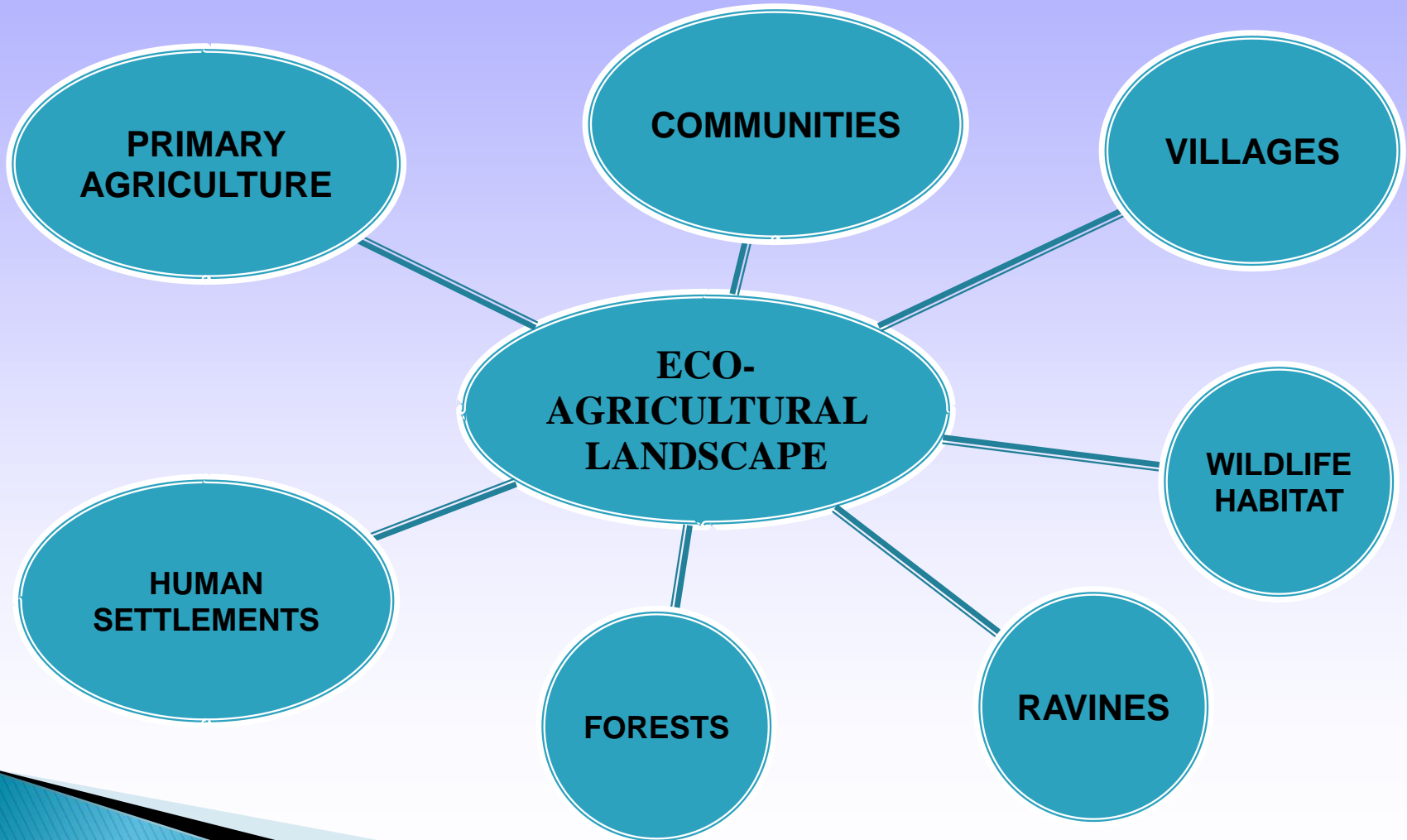
MARCH 10 AND JUNE 20, 2010

What were we looking for:

- ▶ **Farmers, Farming communities and their farming practices;**
- ▶ **Changes that may be occurring in their lands;**
- ▶ **Changes that may be occurring in the wider landscape;**
- ▶ **The presences of institutions and organizations that can help.**

What did we find?

Living Examples of Eco-Agricultural Landscapes



Conditions of Vulnerability:

- ▶ **Use of Harmful Pesticides creating**
 - **Pollution of water courses**
 - **Reduction of bio-diversity**
 - **Degradation of the soil**
 - **Reduction in soil fertility**
- ▶ **Slash & Burn methods of land clearing causing**
 - **Land erosion problems**
 - **Forest fires in dry season**
 - **Destruction of forest cover**

Conditions of Vulnerability:

▶ **Caura Valley Farmers**

- **Cultivate on slopes without incorporating hillside soil conservation techniques such as terracing, building wind breaks, check dams etc. This has the potential of leading to erosion and soil loss on the hillsides.**

▶ **Maracas Valley Farmers (La Baja and Acono)**

- **Cultivate lands in the forest above; practice slash and burn agriculture and shifting cultivation, on a year by year basis**

Farming Communities

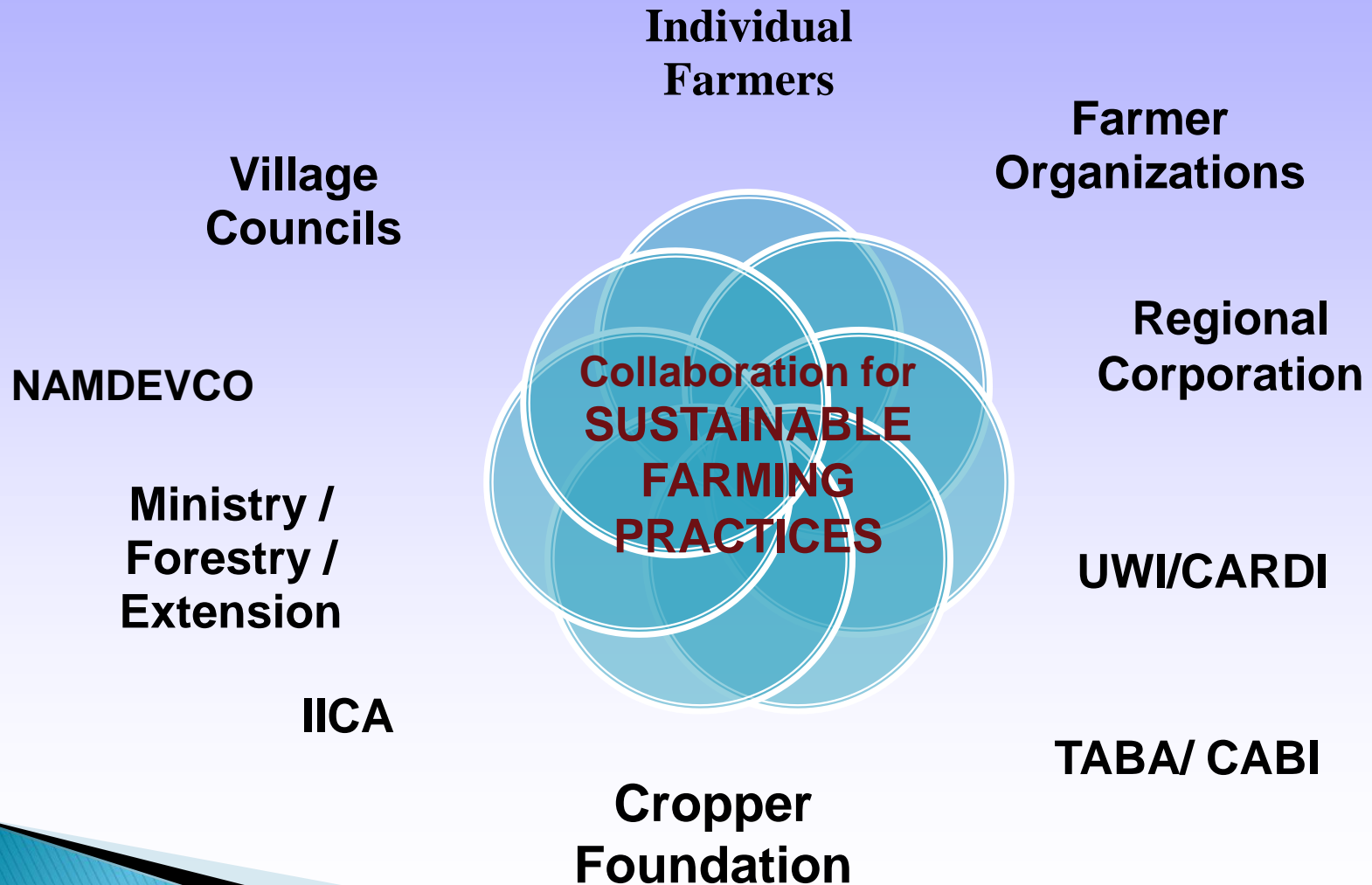
Caura Valley	Number of Farmers	% of Total
Tumbasson	28	31.82%
Caura Royal Road	35	39.77%
Concordia	15	17.05%
Cachipa	10	11.36%
TOTAL	88	

Maracas Valley	Number of Farmers	% of Total
La Grind Road	8	23.53%
La Baja	11	32.35%
Acono	12	35.29%
Maracas	3	8.82%
TOTAL	34	
Maracas St. Joseph Farmers Association	42	

Farm Profiles

	Caura Valley	Maracas/St. Joseph
Commercial Farms	Small farms growing commercial crops, averaging about 5 acres	In Caurita and Lluango
Subsistence farms	Not Significant	More 1- acre farms
Direct Hillside Farming	Farmers in growing on the hillside.	Farmer in La Baja cultivates on hillside during the rainy season, During the dry season utilizes grow box technology on smaller plot on flat.

Community of Responsible Actors



Priority SETTING

Exercise

What does ATTRACTIVENESS mean

ATTRACTIVENESS

```
graph LR; A[ATTRACTIVENESS] --> B[POTENTIAL BENEFITS Exist]; A --> C[You are ABLE TO CAPTUREe];
```

POTENTIAL
BENEFITS
Exist

You are
ABLE TO
CAPTUREe

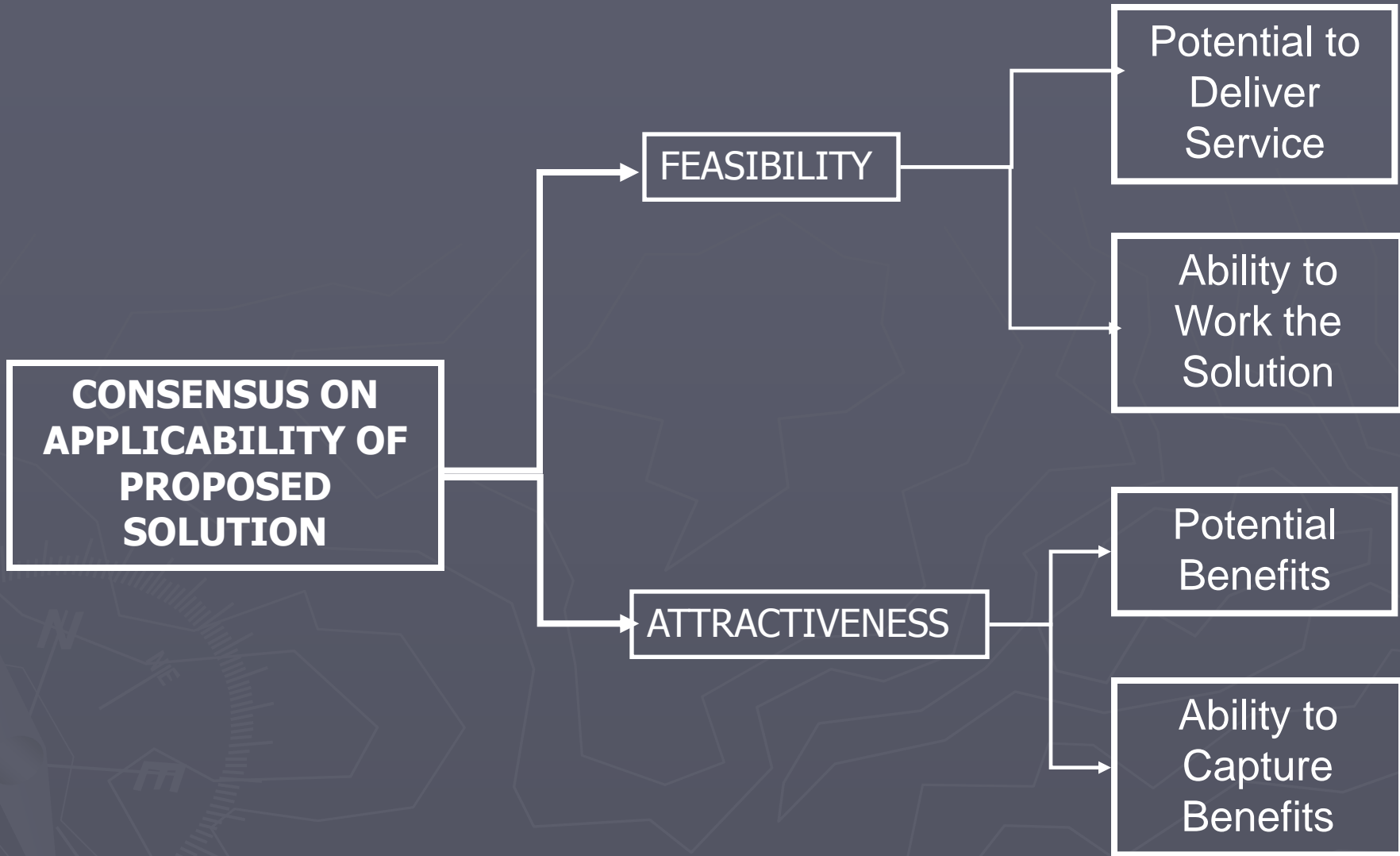
What does FEASIBILITY mean:

FEASIBILITY

```
graph LR; A[FEASIBILITY] --> B[POTENTIAL TO DELIVER]; A --> C[ABILITY TO WORK THE SOLUTION];
```

POTENTIAL
TO
DELIVER

ABILITY TO
WORK THE
SOLUTION



How do we build consensus on THE APPLICABILITY OF THE PROPOSED INTERVENTION

Scoring Your Evaluation

We encourage you to
make your evaluation as
an

ACTOR

not as a Victim



HOW WE WILL RANK YOUR PREFERENCES

